

The Beacon

Number 2 THE NEWSLETTER OF BEACON RISE PRIMARY SCHOOL Nov 2009

HEADITORIAL

As Christmas approaches, with parties, lunches, performances and fairs all being planned things are getting busier and busier.

It is really impressive that with all this going on that we have been able to raise such huge sums of money for FBR and Children in Need. Over £1700 has been raised in the last month. Many thanks for your support.

Mr Thomas

Children In Need

Well done to everyone who supported this cause by dressing up in PJ's on Friday 20th Nov. Together we raised a massive £236.66.



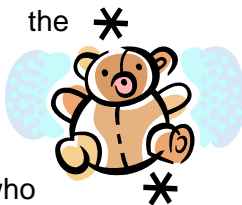
Disco

Just to let you know the disco, last week made a stupendous **£316.56**. Well done to everyone for organising a very well run event.



Barnardo's

We recently collected towards the Barnardo's charity appeal. There was a prize of a cuddly bear for a lucky name picked out of a hat. Well done to Ellie in Year 2 for winning and thank you to everyone who contributed to this very worthwhile cause.



Diary Dates

Nov

30th Year 5 Colston Hall Day

Dec

1st Children's Christmas Dinner

2nd Y5 Concert at Colston Hall

4th **INSET DAY – School Closed** to pupils

7th NPM, RM, 1BL Christmas Production

8th NPM, RM, Y1, Y2, Y3 Christmas Production

9th NAM, RT, 1BR, Y2, Y3 Christmas Production

10th NAM, RT, 1BR, Y4, Y5, Y6 Christmas Production

11th Y4, Y5, Y6 Christmas Production

Bike It Talent Show

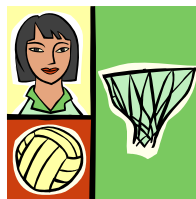
17th Party Day

18th Bike It Prize Giving

End of Term – Break up for Christmas Holiday

Jan

4th Return to School



Netball

Well done to our school Netball Team. We had a friendly match against Barrs Court. Our two named teams are the 'Beaca Bears' and 'Cheeky Chimps'. Our next match is next week after school and all are welcome to come along and show support.

Driveway

In the interests of safety please ensure you and your child use the path and not the driveway when walking in and out of school. Vehicles access is constant throughout the day and we need to make sure all our pupils, parents and careers are safe.



Punctuality

Thank you to those pupils who are making the effort to arrive on time every morning for the start of school. Unfortunately several pupils are still arriving after **8.50am**. Class registration closes at 9.00am and any pupil arriving after this time must go to the school office to be registered. All late arrivals are closely monitored by the Authority and any pupil arriving after registration has closed will be referred to Education Welfare. Please remember that pupils arriving late not only cause disruption to the class but may start their day feeling anxious and distressed. We have your child's best interests at heart and would appreciate your co-operation with this.

On wet mornings reception parents can bring their children into Frome Hall if the teacher on duty has indicated this.



Christmas Fair

The FBR Christmas Fair will be held after school on **Friday 27th November**. Everyone is welcome and we hope to see you there enjoying yourselves. Please come along and support this event. Our very special visitor will be there again to listen to all our pupils Christmas wishes! Have fun





Police

We have been notified by the Police that they have been conducting random patrols of vehicles parking outside the school entrance on double yellow lines. They have informed us that from now on they will be issuing parking tickets to any vehicle illegally parked.



Please remember that the staff car park by the canteen is for staff only and should not be used for dropping off or collecting pupils.

Dinner Money

All Dinner money should be brought to school and handed to your child's class teacher in an envelope clearly labelled with your child's name on a **MONDAY MORNING**. The cost of a school dinner is now £1.60 per meal and should be paid for in advance. Wherever possible please ensure the correct amount is enclosed and all cheques should be made payable to Beacon Rise Primary School.



School Uniform

We like to encourage all our pupils to wear the correct school uniform at Beacon Rise. This uniform includes black shoes. It not only promotes equality within the school but also creates a sense of belonging. Please support us and wherever possible ensure your child comes to school correctly dressed.

Breakfasts

Scientific research has proven that eating breakfast helps promote alertness and improved concentration levels. We like to encourage all our pupils to eat healthily and have breakfast before they come to school. Please help to ensure your child has breakfast at home before they start their day at school.



Earrings

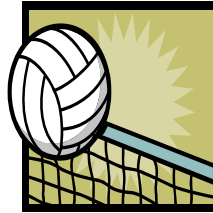


We have an increasing number of pupils who wear earrings to school. During PE and swimming we encourage our pupils to cover their earrings with a plaster to help avoid the risk of an accident from jewellery getting caught in clothing or on apparatus.

Please supply your child with plasters to cover their jewellery during these sessions. Hooped earrings should not be worn at any time.

Football

The Beacon Rise football team has played a number of matches recently. Apparently due to a series of unfortunate incidents outside their control, usually due to refereeing abnormalities, they have been relatively 'unlucky'.



New Staff



Welcome to our two new Lunch Break Supervisors Mrs Joanne Hemmings and Mrs Jane Blake. I am sure you will join me in wishing them well and hope they enjoy working at Beacon Rise Primary.

Coughs and Colds



With the recent well publicised outbreak of Swine Flu we like to encourage all our pupils, staff and parents to help prevent germs from spreading by following some simple guidelines:

- Sneeze into a tissue;
- Put the used tissue in a bin as soon as possible;
- Wash your hands regularly.

On one day last week we had over 40 pupils away from school so your support with this would be greatly appreciated.

Reminder In-Service Day



The school will be closed on **Friday 4th December 2009** for staff training.

Help

The work on our conservation area is nearly finished, but we need some help as the fencing at the front of the area needs to be completed.



Fence posts need to be concreted in and rails need to be added.

Do you know anyone who can do this for us?

Arriving at school

Please remember that when pupils arrive at school in the morning they should be lining up in their class groups. Children should not be playing in unsupervised areas or running / riding around the playground.



Pedestrian gate

Please be aware that the gate on the pedestrian entrance in Beacon Lea is designed to close automatically for security reasons. Please supervise children in a way that ensures they do not trap their fingers.

